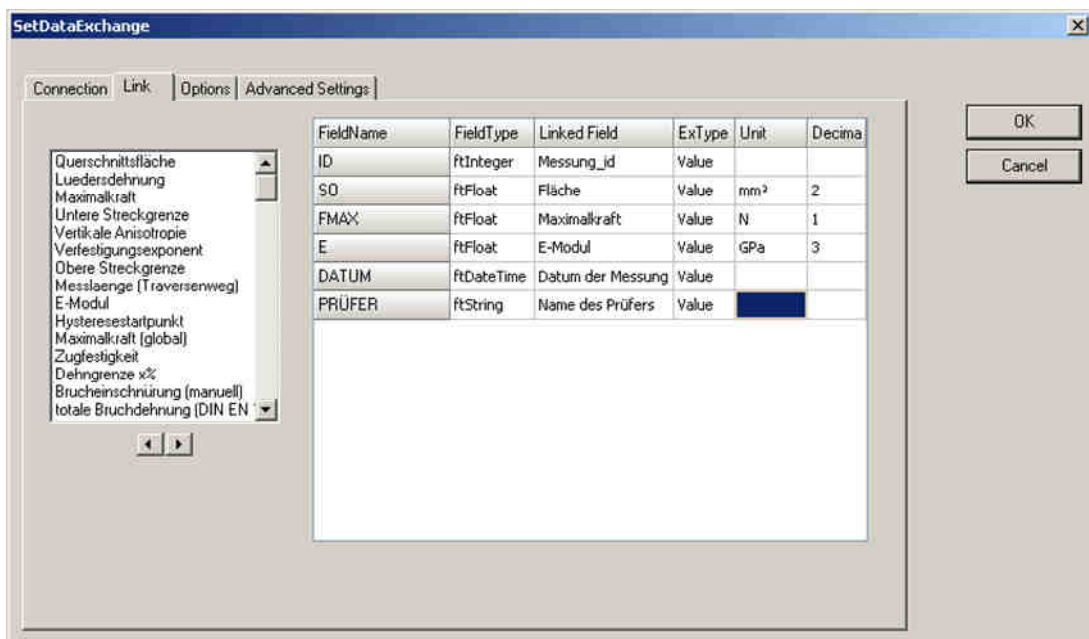




Product Information

LabMaster – module

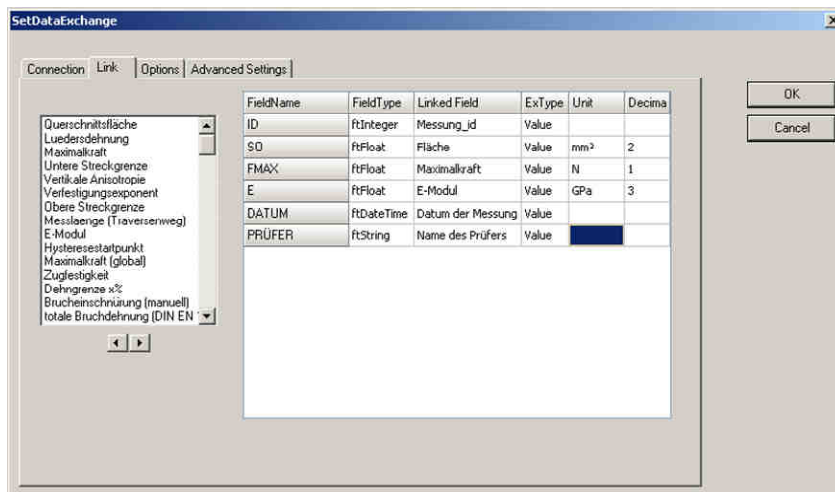
Advanced data import and export



Export

With this function, test data can be exported to existing quality assurance systems or other user-defined formats. It is configured with the help of the interface definition. Basically, the data are exported via a database interface (ODBC). Possible target systems include SAP®, Microsoft Access®, Excel®, LIMS (Labor-Informationssystem: laboratory information and management system) or customer-specific interfaces.

- 18-014-016
LabMaster – module advanced import
- 18-014-017
LabMaster – module advanced import - licence
- 18-014-018
LabMaster – module advanced data import and export (Bundle)
- 18-014-019
LabMaster – module advanced data import and export - licence



Import

The import of data is supported in the same way. This function requires an interface definition by the customer's information systems department. It allows for the automatic import of specimen and test parameters which can be the basis for the analysis in LabMaster. Data of automatically measured specimens are the basis for routine tests.

- 18-014-014
LabMaster – module advanced export
- 18-014-015
LabMaster – module advanced export – licence

Your contact person: